

FOR REFERENCE ONLY

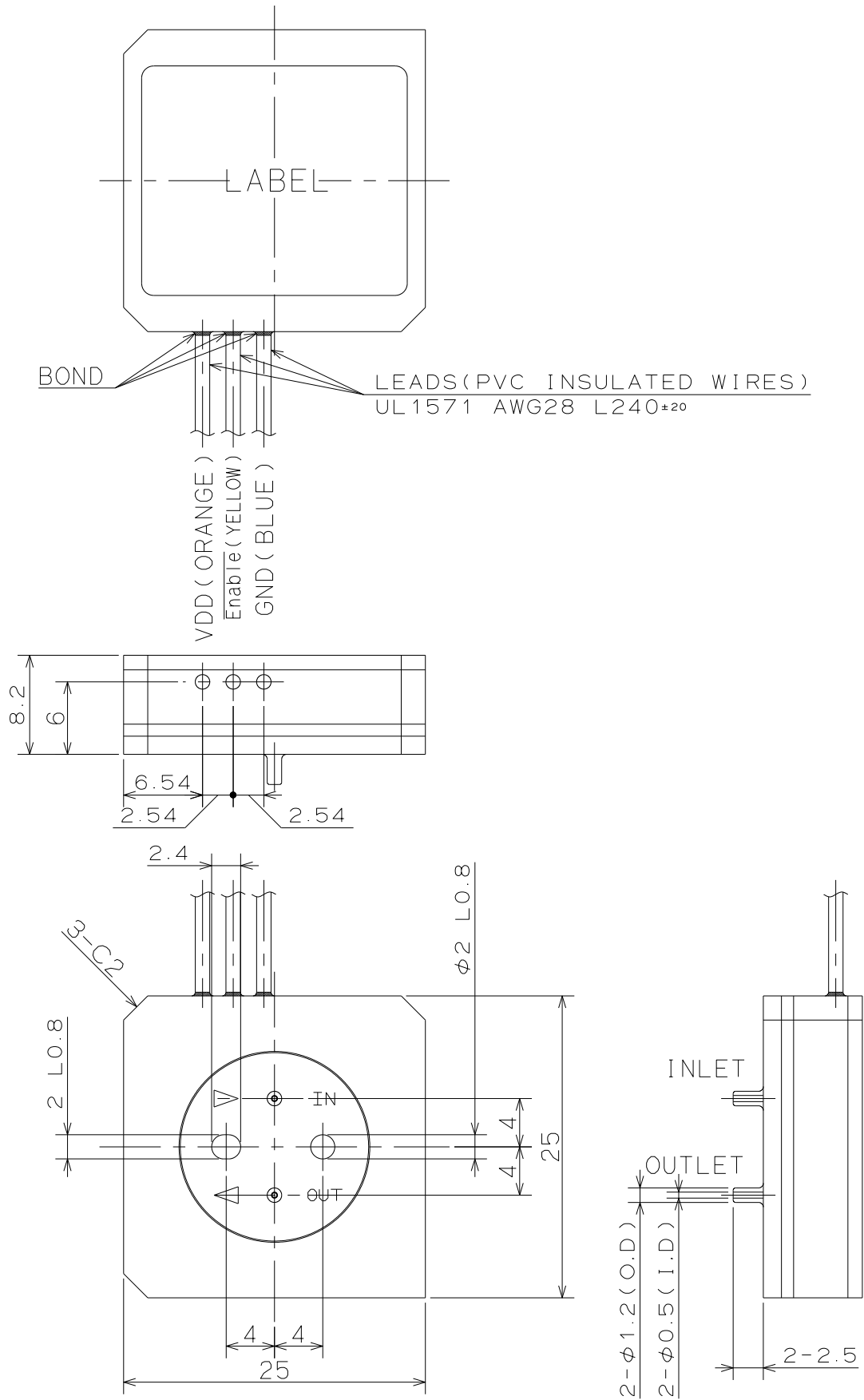
PIEZOELECTRIC MICRO PUMP

SPECIFICATIONS for MODEL SDMP302D

- DRIVE METHOD : PIEZOELECTRIC ELEMENT
- FLOW RATE : 3ml/min(Typ.)
(DISCHARGE/SUCTION LOAD PRESSURE=0kPa)
- PUMP PRESSURE : 40kPa(Typ.)(FLOW RATE=0ml/min)
- SUCTION LOAD PRESSURE : -1.0kPa(Typ.)
- PORT CONNECTION : HOSE BARB
- FLUID MEDIA : FLUIDS CHEMICALLY COMPATIBLE WITH MATERIALS BELOW
- MEDIA TEMPERATURE RANGE : 5 ~ 50°C
- AMBIENT TEMPERATURE RANGE : 5 ~ 50°C
- STORAGE TEMPERATURE RANGE : 0 ~ 55°C
- INPUT VOLTAGE : 5VDC±5%
(INTERNALLY CONVERTED TO APPROX. 250V_{p-p}. 30Hz FOR PUMP DRIVE.)
- POWER CONSUMPTION : 5mW(REFERENCE, STAND-BY)
120mW(REFERENCE, OPERATING)

THE ABOVE SPECIFICATIONS ARE BASED ON THE FOLLOWING CONDITIONS

- STANDARD OPERATING CONDITION
- AMBIENT AND FLUID TEMPERATURE : 25°C
 - FLUID MEDIA : PURE WATER
 - INPUT VOLTAGE(VDD) : 5VDC±5%
 - TUBING : I.D. 1/32in LENGTH 40mm



WETTED MATERIALS

ELASTOMER DIAPHRAGM	EPDM	2	
PLASTIC DIAPHRAGM	COC	1	
DOWN SIDE PUMP HOUSING	COC	1	
UP SIDE PUMP HOUSING	COC	1	
PART NAME	MATERIAL	REQD.	NOTE
PIEZOELECTRIC MICRO PUMP SDMP302D			